

SMITH RANCH AT SHADOW CREEK

---

SILVERTHORNE, CO



## MISSION

*Shadow Creek Ranch offers all the joys of ranch living without the burdens of day-to-day maintenance. Ownership at Shadow Creek Ranch will allow you to step inside a worry free world of ranch ownership.*

# SMITH RANCH AT SHADOW CREEK

SILVERTHORNE, CO

70 Acres

\$3,000,000

Ownership of this 6,450 square foot custom log home at Shadow Creek Ranch gets you access to over 5,800 acres of private Colorado high country containing 22 lakes and ponds full of cutthroat, brown, brook and rainbow trout, over 22 miles of ATV trails, guided trophy elk and mule deer hunts, horseback riding, snowmobiling on over 20 miles of groomed trails, guiding fishing, a full time chef and concierge staff.





## CONSERVATION

*Few have experienced a place like Shadow Creek Ranch. The goal is to preserve the untouched mountain character. To achieve this, Shadow Creek Ranch established a conservation easement with Summit County in December of 2000. This prevents further changes or development to the land outside the current plans and will guarantee its conservation for generations to come. Shadow Creek has carefully orchestrated development to optimize the ranch's natural landscapes.*

# ABOUT

---

## Acreage & Description

---

This 6,450 square foot quintessential log home sits alongside of the picturesque Sawmill Meadow on 70 acres with breath taking views of the Sleeping Indian Mountain, Eagles Nest Wilderness area, the Gore and Williams Fork Mountain Ranges, Green Mountain Reservoir, and the Blue River. This is the first time this beautiful six-bedroom, six-bath, custom log home has been offered for sale.

As an owner at Shadow Creek Ranch, you are afforded numerous activities. The 5,860-acre ranch and adjoining 130,000-acre Eagle's Nest Wilderness Area provide endless trails for horseback riding, hiking, snowmobile and ATV use. More than 22 lakes and ponds as well as the Gold Metal Waters of the Blue River provide worldclass fly fishing. Five fully stocked out cabins are ideal destinations for a mid-day lunch or overnight stay. Owners may even take part in special ranching activities including ranch roundups and livestock feeding.



---

## Improvements

---

A wonderful chef's kitchen perfect for entertaining family and friends with a custom built butcher block island. Spacious dining room with walls of windows overlooking the hay meadows and mountains beyond.





## DRAMATIC GREAT ROOM

*Dramatic great room with soaring ceilings, and majestic stone fireplace, the perfect room for a white Christmas morning or a cool winters evening by the fire.*



## LUXURIOUS MASTER

*Luxurious master with spa style bath, custom master closets, and private study overlooking the beautiful flower gardens.*



---

## Three-Car Garage

---

Along with 6,450 square foot main residence is a three-car garage with attached shop, art studio, and handcrafted log horse barn and tack room.

---

|            |           |
|------------|-----------|
| Horse Barn | Tack Room |
|------------|-----------|

---

---

## Shop & Art Studio

---



# AMENITIES & SERVICES

---

## A Step Beyond Extraordinary

---

First-class service and amenities make each moment at the ranch special. As an owner, you will receive yearly access to 40 hours of private recreational guides, 55 suite nights in the lodge or guest house and 45 cabin nights. Property owners also have the added benefit of horse, snowmobile and all-terrain vehicles use. First class concierge service makes travel simple with shuttle service to and from area airports. Luxury services include firewood delivery, transportation services and grocery delivery through the Shadow Creek Ranch concierge. Shadow Creek Ranch is less than ten miles south of the private, jet accessible airport in Kremmling, Colorado and less than 2 hours from Denver International Airport. After a long day exploring the ranch, you will enjoy our full-time private chef and our cocktail hour and event get-togethers. The staff is here to accommodate your needs and ensure that your ranch property is a step beyond extraordinary.

---

|                         |                           |
|-------------------------|---------------------------|
| Catering & Private Chef | Horseback Riding Lessons  |
| Recreational Guides     | Horse Boarding & Training |

---

Sit back and relax while our caretakers handle that “not so fun stuff.” You can expect year round road maintenance, snow removal from private walks and driveways, firewood cut and stacked at your homesite and advanced shopping for groceries.

---

## Ranch Roads & Equipment Maintenance

---

---

|              |          |
|--------------|----------|
| Snow Removal | Firewood |
|--------------|----------|

---





## EQUESTRIAN CENTER

*Enjoy full use of the indoor and outdoor riding arenas and equestrian center for riding, boarding, training & lessons.*



## RANCHING

*Ranching operations provide owners the opportunity to learn and participate in cattle roundups and horse riding activities. Property owners have the added benefit of horse, snowmobile and all-terrain vehicles use.*

# ACTIVITIES

---

## First Class Adventure

---

Each day at Shadow Creek Ranch will take you to a new place. Do you want to ride through the forest on horseback or hit the trail on a snowmobile? Do you want to meet your friends at the ski slope or sink that 15-foot putt? Have you ever driven cattle like a true cowboy? Shadow Creek Ranch offers recreation for every interest and every season. As an owner, you have exclusive access to first class activities and adventure. Come create the memories you've always dreamed of at Shadow Creek Ranch.

---

## Gold Medal Water Fishing

---

|              |        |      |
|--------------|--------|------|
| Snowmobiling | Skiing | ATVS |
|--------------|--------|------|

## Trophy Elk & Mule Deer Hunting

---

|        |                 |                  |
|--------|-----------------|------------------|
| Hiking | Mountain Biking | Horseback Riding |
|--------|-----------------|------------------|

## Private Professional Guides

---



# LOCATION

---

98 Miles from Denver

---

Located off Highway 9 in Summit County Colorado, Shadow Creek Ranch offers nearly 6,000 acres of private refuge adjacent to the Arapaho National Forest. The property lies just north of Eagles Nest Mountain, which affords owners breathtaking backdrop of canyons, meadows, high alpine forests and the Gore and Williams Fork mountain ranges. Less than two hours west of Denver and within one hour of seven major ski resorts, owners enjoy the privacy and activities of the ranch with easy access to fine dining, shopping, and the excitement of first class golf and skiing at many local towns and resorts.

---

4 Miles Off Highway 9 in Summit County

---

On the Blue River

---

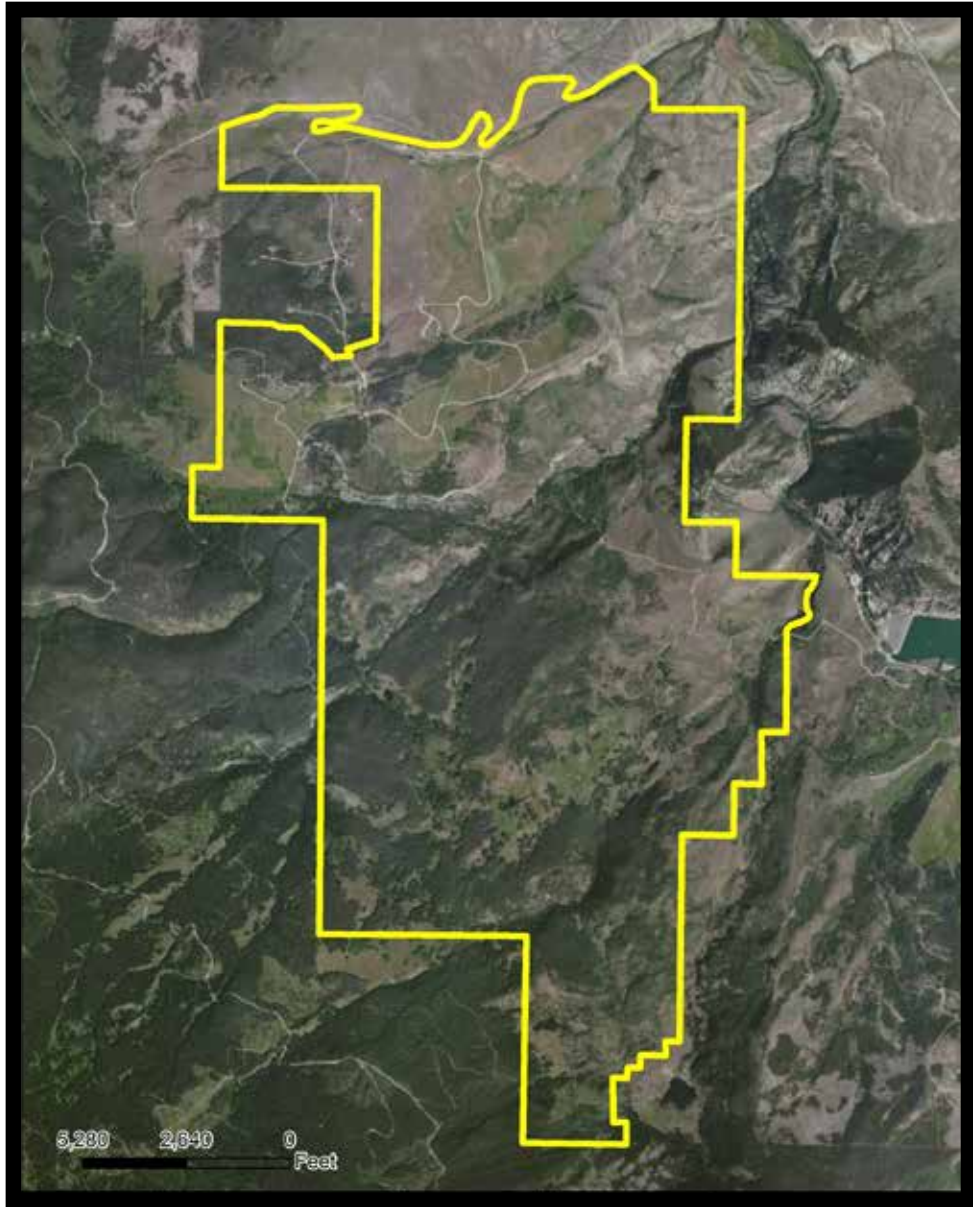
Within 1 Hour of 7 Ski Resorts

---

Adjacent to Arapaho National Forest

---







[www.ColoradoRanchCompany.com](http://www.ColoradoRanchCompany.com)

970.724.5900

217 Central Ave. | Kremmling, CO 80459